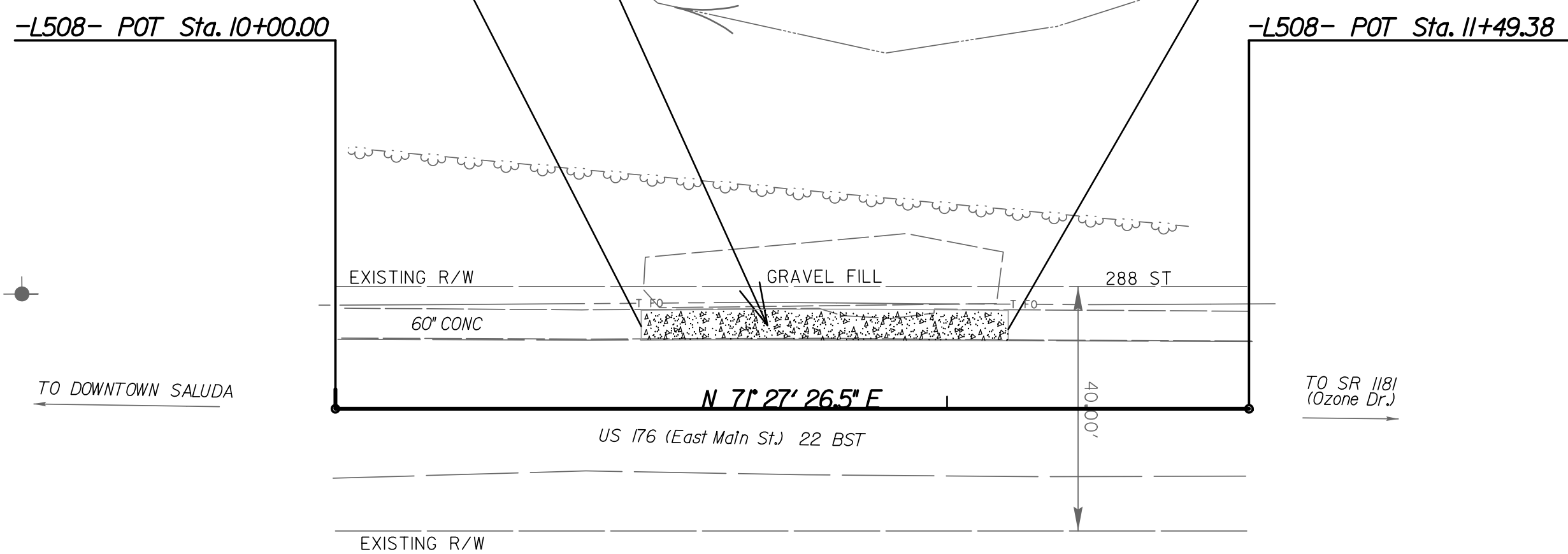


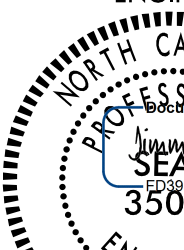
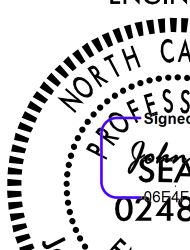
11/11/2025 X:\NCDOT\Div 14 US 176 Repair\Roadway\Design\Town Plan Sheets\US176_Town_Rdy_psh06.dgn User:coruett	
--	--

REPLACE DAMAGED 5' SIDEWALK  
IN THIS AREA. APPROX. 60 LF  
AS DIRECTED BY THE ENGINEER

END CONSTRUCTION  
-L508- STA 11+10 +/-



NAD 83/2011

PROJECT REFERENCE NO.	SHEET NO.
18/314.07/5011	06
RW SHEET NO.	
ROADWAY DESIGN ENGINEER	HYDRAULICS ENGINEER
	
11/1/2025	11/2025
<p align="center"><b>DOCUMENT NOT CONSIDERED FINAL UNLESS ALL SIGNATURES COMPLETED</b></p>	
<p align="center"> <b>TCS ENGINEERS</b>          201 W. MARION ST          SHELBY, NC 28150          PH. (704) 476-0003          CORP. LICENSE NO.: C-0275       </p>	